

# Bicycle Collisions

CITY OF VENTURA



# who we are

## Public Works Transportation Division

Explore your mobility options in Ventura



**DRIVE**



**RIDE**



**PEDAL**



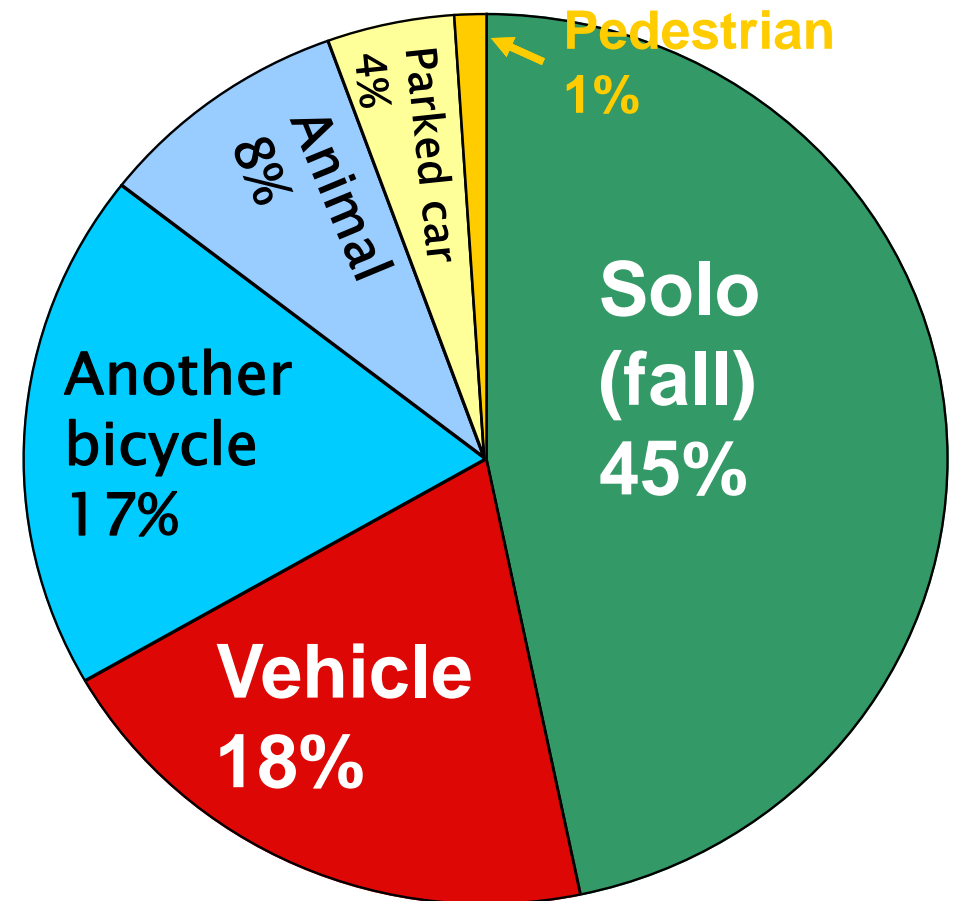
**WALK**



# Most bicycle crashes don't involve a motor vehicle

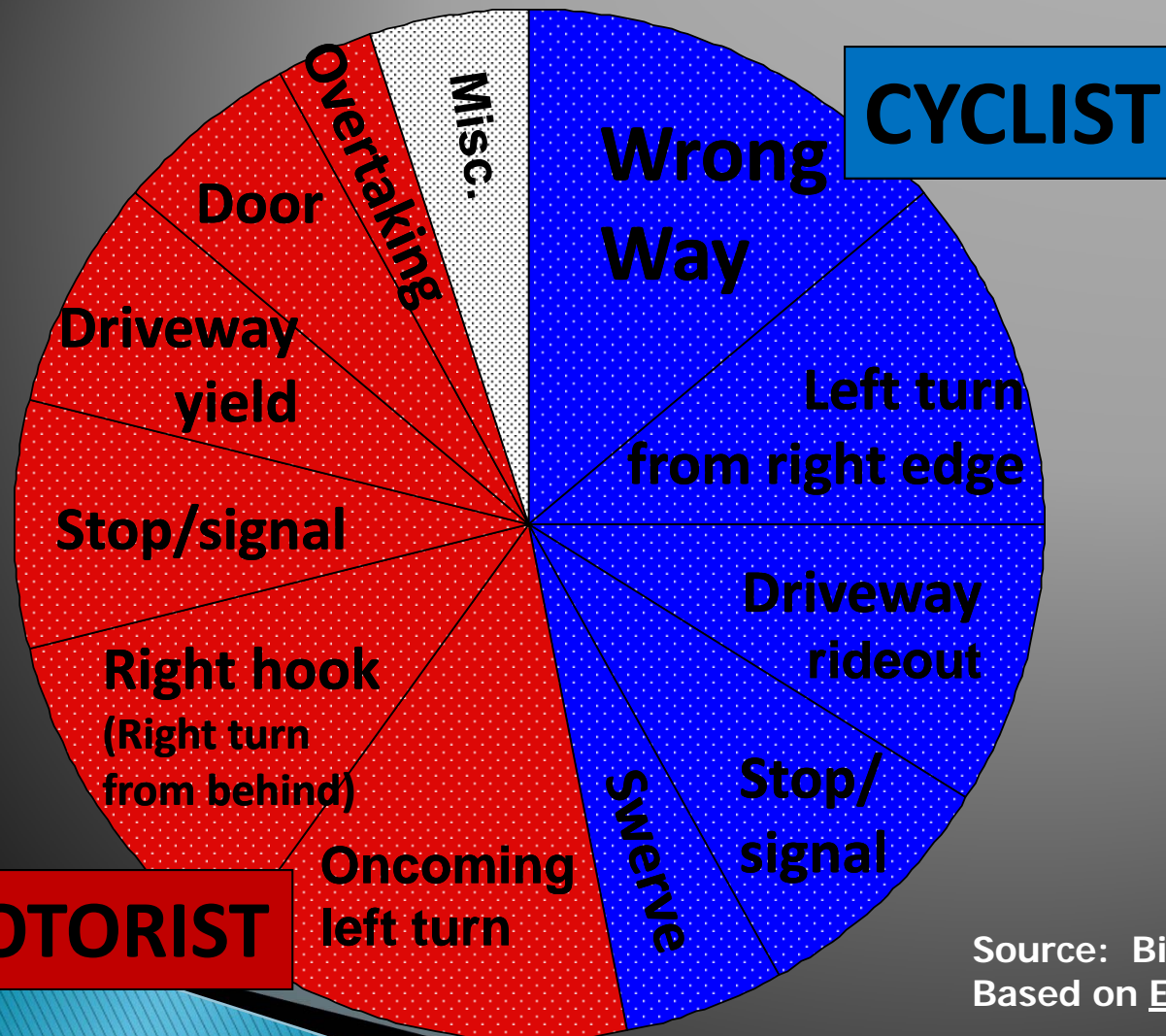
Six most Frequent Sources of Injury	%
Hit by car	29
Fell	17
Roadway/walkway not in good repair	13
Rider error/not paying attention	13
Crashed/collision	7
Dog ran out	4

Source: 2014 Pedestrian & Bicycle Information Center



Source: Kaplan, "Characteristics of the Regular Adult Bicycle User"

# BiCYCLE Vs. Car Crashes who is at fault?



90% involve :

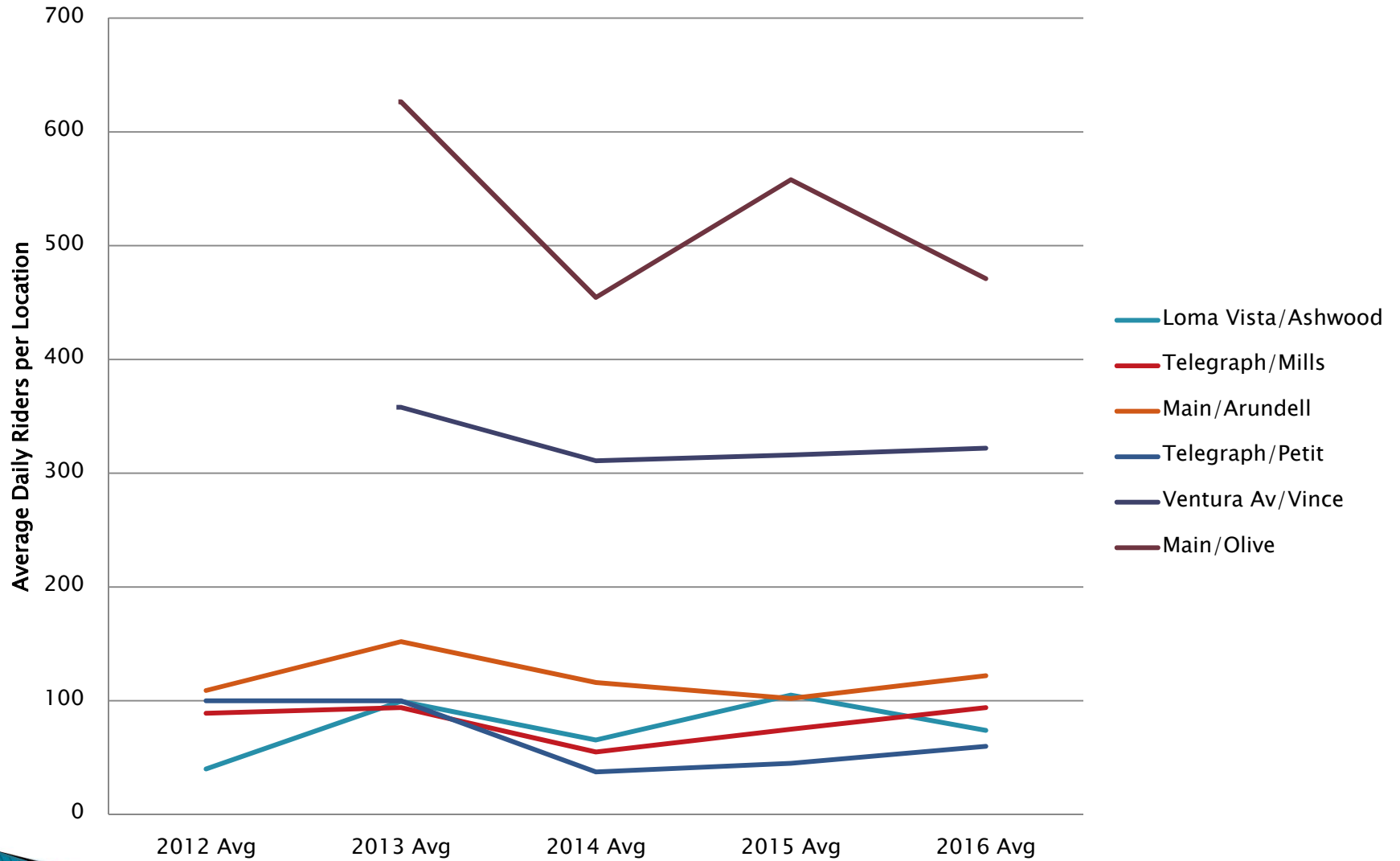
- turning
- crossing traffic
- failing to yield

About half are the cyclist's fault.

You can anticipate and avoid most motorist-caused types.

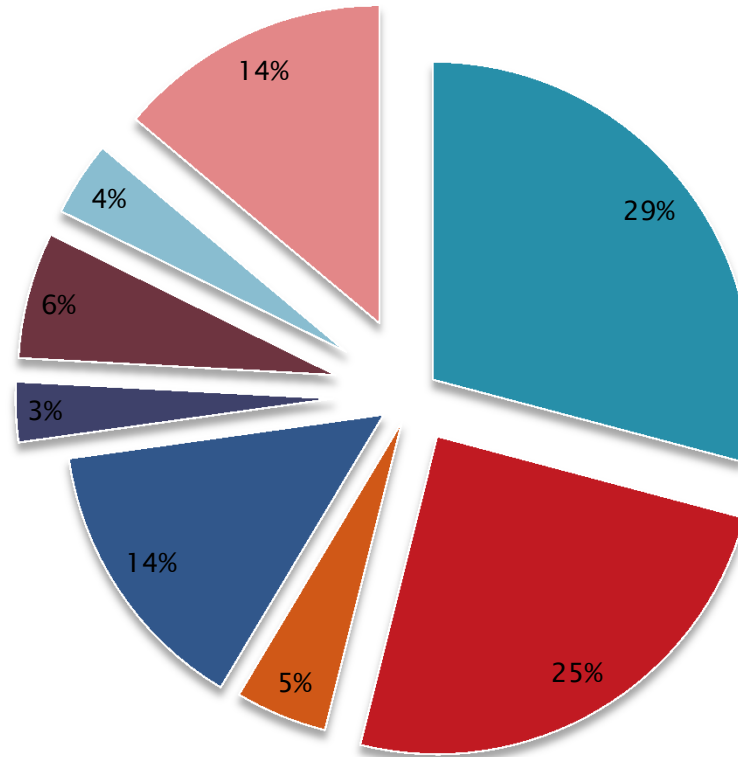
Source: BikeEd Instructor Manual  
Based on Effective Cycling

## Annual Bicycle Counts



## City of Ventura Totals 2016

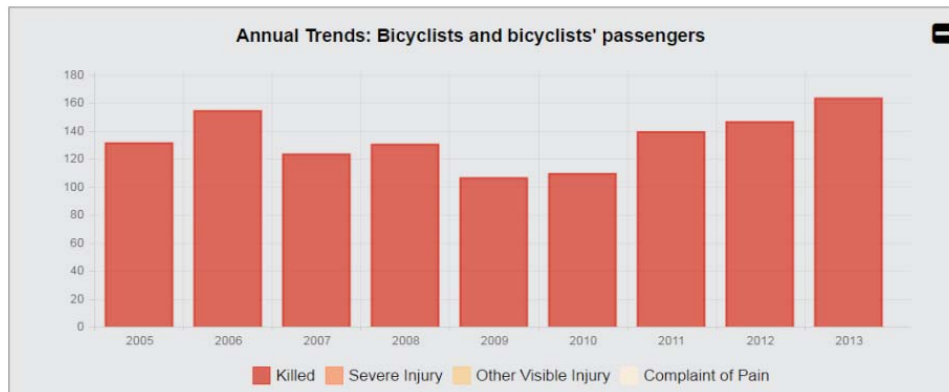
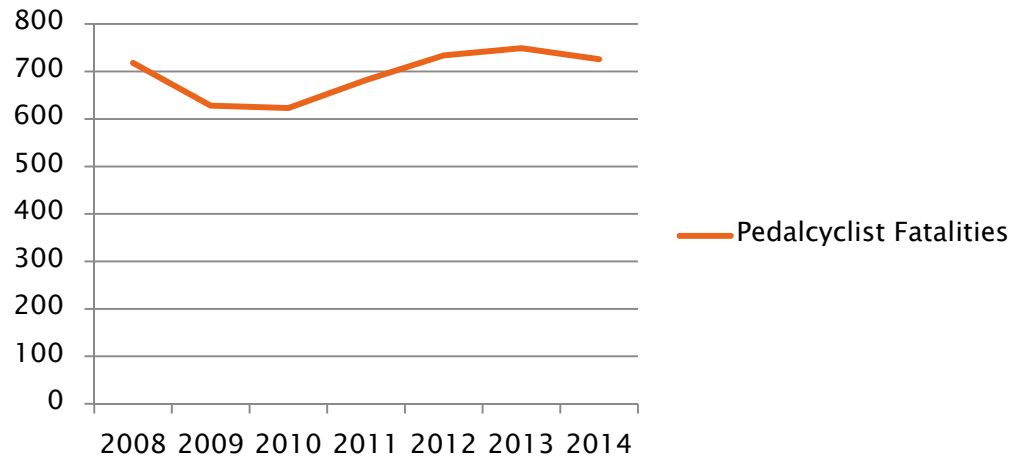
- On Street, with traffic, Helmet
- On Street, with traffic, No Helmet
- On Sidewalk, with traffic, Helmet
- On Sidewalk, with traffic, No Helmet
- On Street, against traffic, Helmet
- On Street, against traffic, No Helmet
- On Sidewalk, against traffic, Helmet



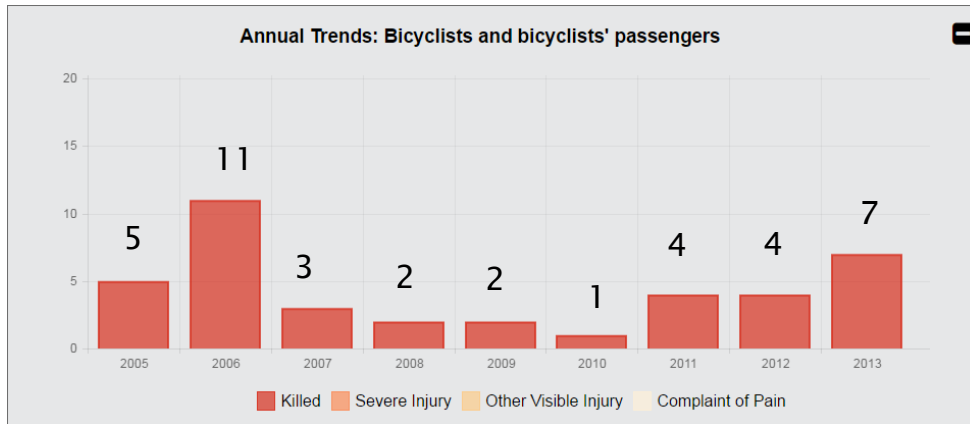


# Bicycle Collisions In California & US

## Nationwide Pedalcyclist Fatalities



# Bicycle Collisions In Ventura County

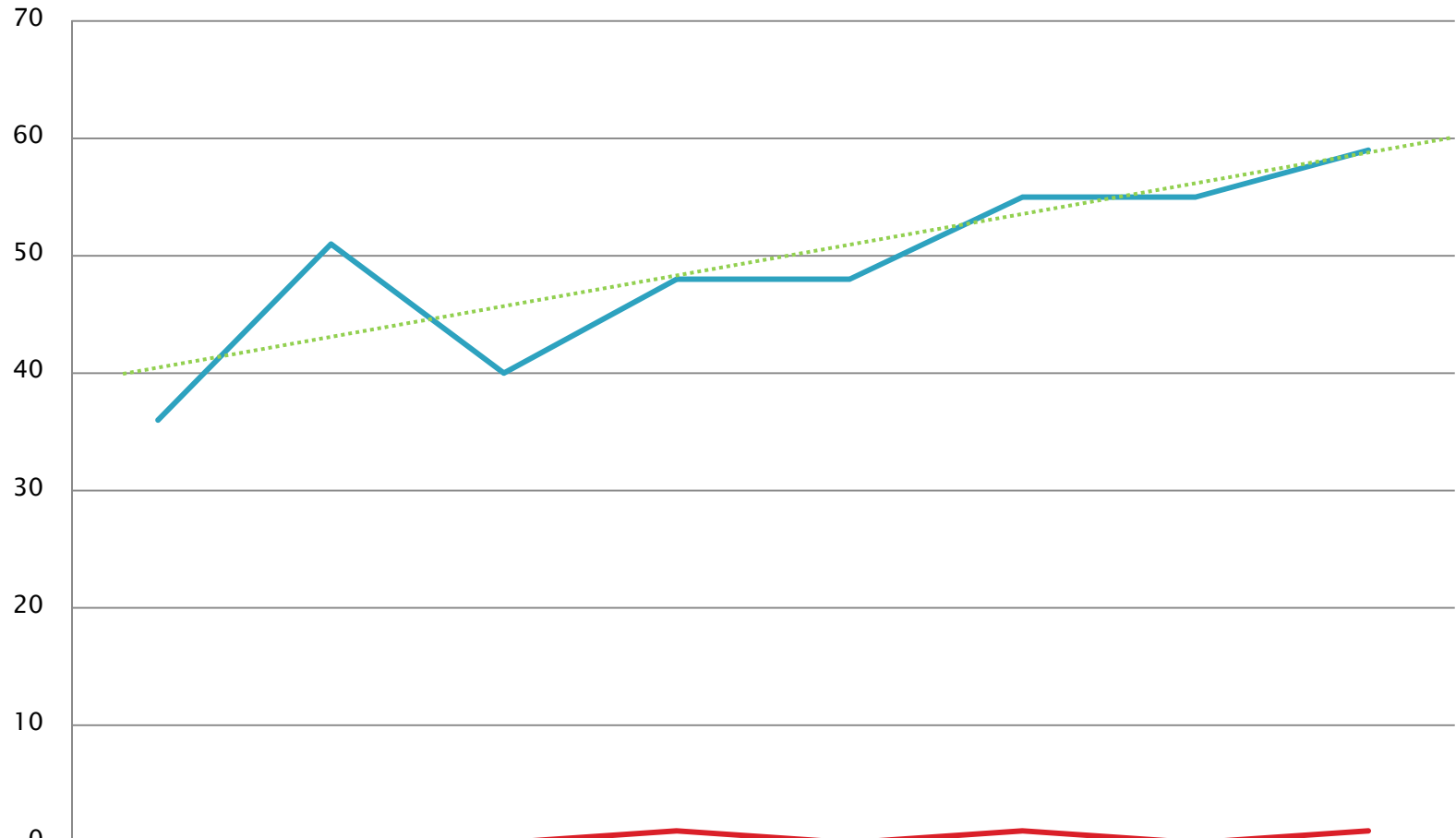


PCF Violation			Day of Week		
01 - Driving or Bicycling Under the Influence of Alcohol or Drug	5	2%	1 - Monday	43	17.3%
02 - Impeding Traffic	0	0%	2 - Tuesday	40	16.1%
03 - Unsafe Speed	17	6.9%	3 - Wednesday	33	13.3%
04 - Following Too Closely	2	0.8%	4 - Thursday	39	15.7%
05 - Wrong Side of Road	67	27%	5 - Friday	30	12.1%
06 - Improper Passing	4	1.6%	6 - Saturday	33	13.3%
07 - Unsafe Lane Change	3	1.2%	7 - Sunday	30	12.1%
08 - Improper Turning	39	15.7%	Alcohol Involved		
09 - Automobile Right of Way	52	21%	Yes	18	7.3%
10 - Pedestrian Right of Way	1	0.4%	No	0	0%
11 - Pedestrian Violation	2	0.8%	State Highway		
12 - Traffic Signals and Signs	25	10.1%	Yes	44	17.7%
13 - Hazardous Parking	0	0%	No	204	82.3%
14 - Lights	2	0.8%	Vehicle Involvement		
15 - Brakes	0	0%	Pedestrian Collision	2	0.8%
16 - Other Equipment	0	0%	Bicycle Collision	248	100%
17 - Other Hazardous Violation	5	2%	Truck Collision	2	0.8%
18 - Other Than Driver (or Pedestrian)	2	0.8%	Motorcycle Collision	1	0.4%
19 -	0	0%	Lighting		
20 -	0	0%	A - Daylight	211	85.1%
21 - Unsafe Starting or Backing	1	0.4%	B - Dusk - Dawn	9	3.6%
22 - Other Improper Driving	5	2%	C - Dark - Street Lights	25	10.1%
23 - Pedestrian or Other Under the Influence of Alcohol or Drug	0	0%	D - Dark - No Street Lights	3	1.2%
24 - Fell Asleep	0	0%	E - Dark - Street Lights Not Functioning	0	0%
00 - Unknown	12	4.8%	-- Not Stated	0	0%
-- Not Stated	4	1.6%			





# Bicycle Collisions In Ventura 2008 through 2015



	2008	2009	2010	2011	2012	2013	2014	2015
Injuries	36	51	40	48	48	55	55	59
Fatalities	0	0	0	1	0	1	0	1

# Collisions In Ventura 2010 through 2013

Source Data: [tims.berkeley.edu](http://tims.berkeley.edu)

PCF Violation		
01 - Driving or Bicycling Under the Influence of Alcohol or Drug	5	2.7%
02 - Impeding Traffic	0	0%
03 - Unsafe Speed	6	3.2%
04 - Following Too Closely	0	0%
05 - Wrong Side of Road	64	34%
06 - Improper Passing	1	0.5%
07 - Unsafe Lane Change	2	1.1%
08 - Improper Turning	24	12.8%
09 - Automobile Right of Way	43	22.9%
10 - Pedestrian Right of Way	2	1.1%
11 - Pedestrian Violation	1	0.5%
12 - Traffic Signals and Signs	16	8.5%
13 - Hazardous Parking	0	0%
14 - Lights	1	0.5%
15 - Brakes	0	0%
16 - Other Equipment	0	0%
17 - Other Hazardous Violation	8	4.3%
18 - Other Than Driver (or Pedestrian)	0	0%
19 -	0	0%
20 -	0	0%
21 - Unsafe Starting or Backing	2	1.1%
22 - Other Improper Driving	0	0%
23 - Pedestrian or Other Under the Influence of Alcohol or Drug	0	0%
24 - Fell Asleep	0	0%
00 - Unknown	10	5.3%
-- Not Stated	3	1.6%

Day of Week		
1 - Monday	34	18.1%
2 - Tuesday	27	14.4%
3 - Wednesday	32	17%
4 - Thursday	31	16.5%
5 - Friday	29	15.4%
6 - Saturday	18	9.6%
7 - Sunday	17	9%

Alcohol Involved		
Yes	16	8.5%
No	0	0%

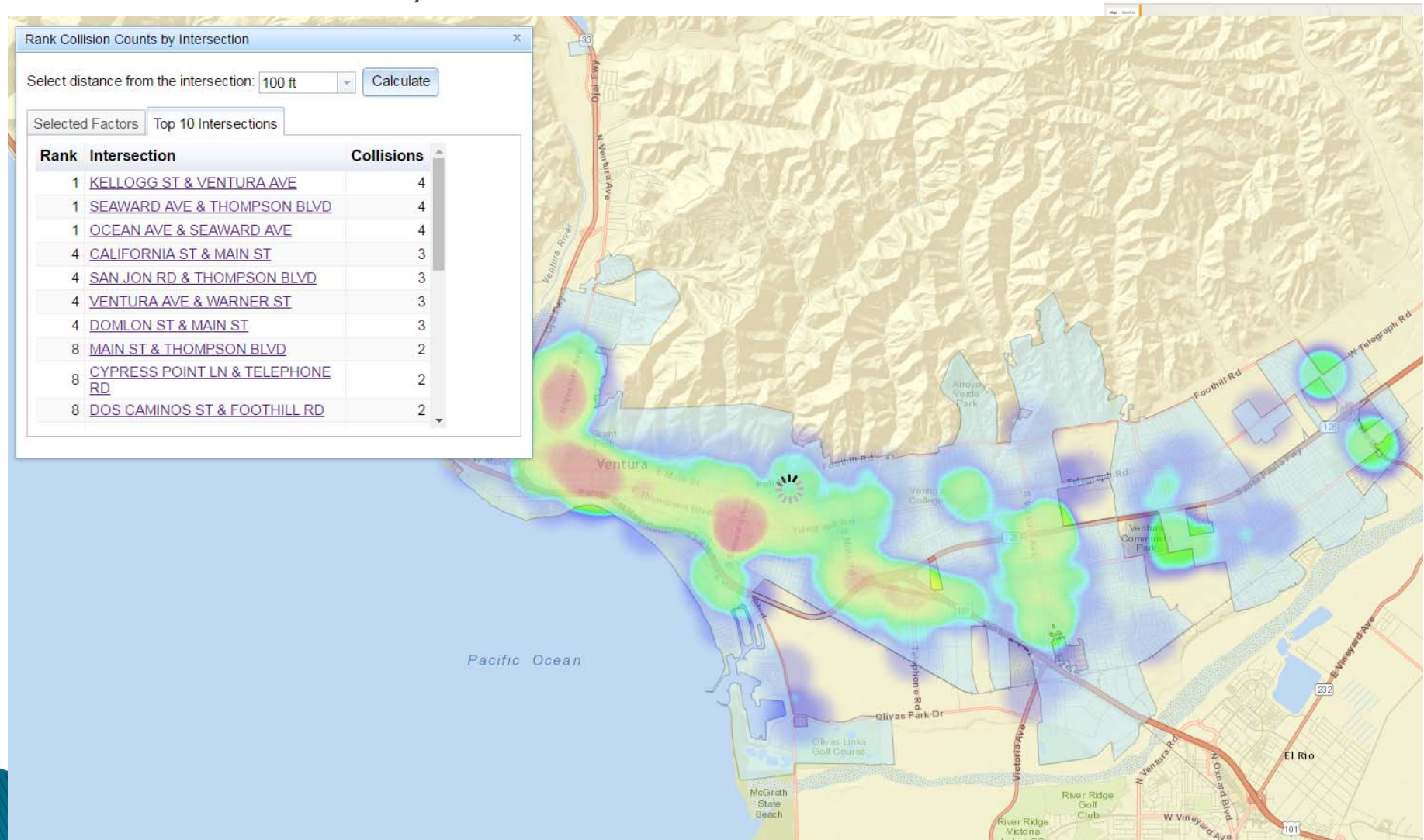
State Highway		
Yes	14	7.4%
No	174	92.6%

Vehicle Involvement		
Pedestrian Collision	1	0.5%
Bicycle Collision	188	100%
Motorcycle Collision	1	0.5%
Truck Collision	2	1.1%

Lighting		
A - Daylight	153	81.4%
B - Dusk - Dawn	5	2.7%
C - Dark - Street Lights	29	15.4%
D - Dark - No Street Lights	0	0%
E - Dark - Street Lights Not Functioning	0	0%
-- Not Stated	1	0.5%

# Collisions In Ventura 2010 through 2013

Source Data: [tims.berkeley.edu](http://tims.berkeley.edu)





# Thank You for Riding!

## CITY OF VENTURA

